

Claremont Ave between Lochside Dr and Cordova Bay Rd
February 25, 2020 To February 27, 2020



The data presented here is for information purposes only and should not be considered authoritative for construction, geotechnical, engineering, navigational, legal, or other site-specific uses. The information shared is owned by the Transportation Division of the Engineering Department at the District of Saanich. Accuracy is not guaranteed.

Start Date: 24-Feb-20
 Start Time: 0:28
 Station ID: C0015-03

Location 1: Claremont Ave between Lochside Dr and Cordova Bay Rd

Note:

DATE:	February 24, 2020		February 25, 2020		February 26, 2020		February 27, 2020		February 28, 2020		WK AVG		WK AVG	HOURLY
	MON		TUE		WED		THURS		FRI		EB	WB	CH 1+2	%
Time:	EB	WB	EB	WB	EB	WB	EB	WB	EB	WB	EB	WB		
12-1 AM			1	1	4	0	4	2			3	1	4	0.2%
1-2 AM			1	1	0	0	0	0			0	0	1	0.0%
2-3 AM			1	0	0	0	0	1			0	0	1	0.0%
3-4 AM			3	0	2	1	2	0			2	0	3	0.1%
4-5 AM			2	3	3	1	4	1			3	2	5	0.2%
5-6 AM			7	4	6	3	7	5			7	4	11	0.5%
6-7 AM			19	18	17	15	13	13			16	15	32	1.5%
7-8 AM			48	70	43	68	49	71			47	70	116	5.4%
8-9 AM			147	135	134	128	142	113			141	125	266	12.4%
9-10 AM			57	77	70	53	69	76			65	69	134	6.2%
10-11 AM			51	67	67	62	55	76			58	68	126	5.9%
11-12 PM			62	78	60	67	54	62			59	69	128	5.9%
12-1 PM			70	57	56	64	70	73			65	65	130	6.0%
1-2 PM			60	56	71	48	63	74			65	59	124	5.8%
2-3 PM			80	70	107	103	72	67			86	80	166	7.7%
3-4 PM			103	106	87	79	83	116			91	100	191	8.9%
4-5 PM			90	77	112	70	104	77			102	75	177	8.2%
5-6 PM			107	88	95	66	82	88			95	81	175	8.1%
6-7 PM			75	49	73	52	77	47			75	49	124	5.8%
7-8 PM			55	40	43	31	52	47			50	39	89	4.1%
8-9 PM			35	48	44	29	35	19			38	32	70	3.3%
9-10 PM			32	20	19	15	20	25			24	20	44	2.0%
10-11 PM			9	11	16	19	15	7			13	12	26	1.2%
11-12 AM			3	5	5	3	10	6			6	5	11	0.5%
LANES			1118	1081	1134	977	1082	1066			1111	1041	2153	100.0%
TOTAL			2199		2111		2148				2160			
	MON		TUE		WED		THURS		FRI		WK AVG			

PEAK HOUR					TOTAL VEHICALS-PEAK PERIODS		2 HOUR PEAK INTERVALS				
MAX. 7 - 9 am PEAK HOUR	266	⇒	12.4%	between 8-9 AM	992	⇒	6 HR TOTAL	2 HR AM (7 - 9 AM)			
MAX. 7 - 11 am PEAK HOUR	266	⇒	12.4%	between 8-9 AM	735	⇒	4 HR TOTAL	VEH / HR	VEH / 2HR	2 HR %	
MAX. 11 am - 1 pm PEAK HOUR	130	⇒	6.0%	between 12-1 PM				7-8 AM	116	383	17.8%
MAX. 11 am - 3 pm PEAK HOUR	166	⇒	7.7%	between 2-3 PM				8-9 AM	266		
MAX. 4 - 6 pm PEAK HOUR	177	⇒	8.2%	between 4-5 PM			24 HOUR FACTORS	2 HR NOON (11 - 1 PM)			
MAX. 3 - 6 pm PEAK HOUR	191	⇒	8.9%	between 3-4 PM	2.17	⇒	6-24 HR FACT.	VEH / HR	VEH / 2HR	2 HR %	
					2.93	⇒	4-24 HR FACT.	11-12 PM	128	258	12.0%
								12-1 PM	130		
								2 HR PM (4 - 6 PM)			
								VEH / HR	VEH / 2HR	2 HR %	
								4-5 PM	177	352	16.4%
								5-6 PM	175		

Claremont Ave between Lochside Dr and Cordova Bay Rd

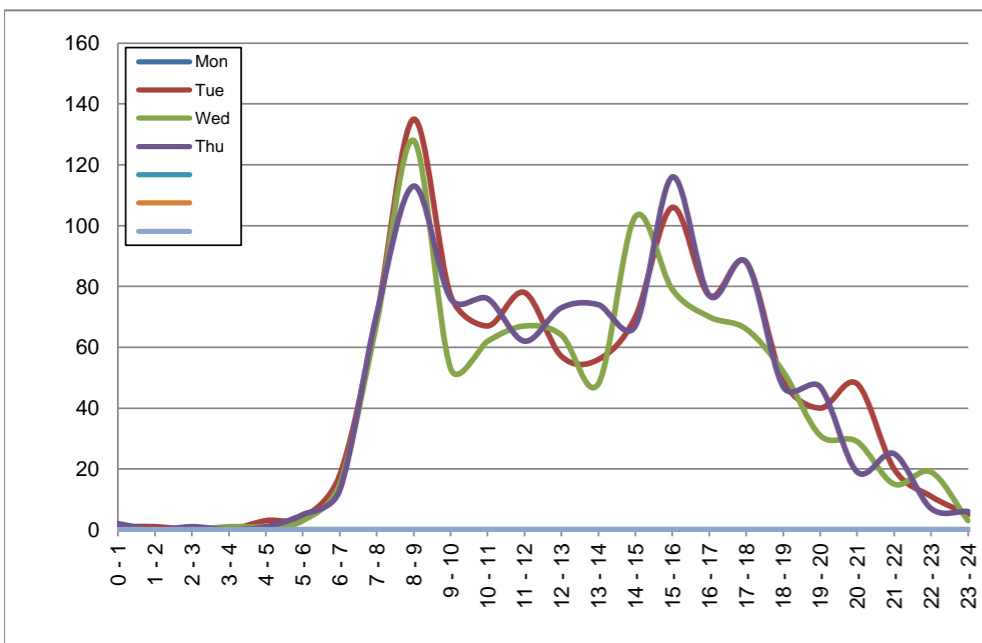
Westbound
February 24, 2020 to February 27, 2020

Hourly Volumes

Time Period	Mon	Tue	Wed	Thu			
	Feb 24	Feb 25	Feb 26	Feb 27			
0 - 1		1	0	2			
1 - 2		1	0	0			
2 - 3		0	0	1			
3 - 4		0	1	0			
4 - 5		3	1	1			
5 - 6		4	3	5			
6 - 7		18	15	13			
7 - 8		70	68	71			
8 - 9		135	128	113			
9 - 10		77	53	76			
10 - 11		67	62	76			
11 - 12		78	67	62			
12 - 13		57	64	73			
13 - 14		56	48	74			
14 - 15		70	103	67			
15 - 16		106	79	116			
16 - 17		77	70	77			
17 - 18		88	66	88			
18 - 19		49	52	47			
19 - 20		40	31	47			
20 - 21		48	29	19			
21 - 22		20	15	25			
22 - 23		11	19	7			
23 - 24		5	3	6			
Day Total		1081	977	1066			

15-Minute Volumes

Time Start	Mon	Tue	Wed	Thu				Time Start	Mon	Tue	Wed	Thu			
	Feb 24	Feb 25	Feb 26	Feb 27					Feb 24	Feb 25	Feb 26	Feb 27			
0:00		0	0	0				12:00		22	11	19			
0:15		0	0	0				12:15		17	17	12			
0:30		0	0	1				12:30		9	24	18			
0:45		1	0	1				12:45		9	12	24			
1:00		1	0	0				13:00		18	15	29			
1:15		0	0	0				13:15		15	10	16			
1:30		0	0	0				13:30		10	12	9			
1:45		0	0	0				13:45		13	11	20			
2:00		0	0	0				14:00		21	22	18			
2:15		0	0	0				14:15		15	17	11			
2:30		0	0	0				14:30		19	18	20			
2:45		0	0	1				14:45		15	46	18			
3:00		0	1	0				15:00		17	25	19			
3:15		0	0	0				15:15		20	16	20			
3:30		0	0	0				15:30		41	23	54			
3:45		0	0	0				15:45		28	15	23			
4:00		0	0	0				16:00		18	18	27			
4:15		2	1	1				16:15		14	20	14			
4:30		1	0	0				16:30		22	15	14			
4:45		0	0	0				16:45		23	17	22			
5:00		0	0	0				17:00		12	7	17			
5:15		2	0	2				17:15		29	20	26			
5:30		1	2	1				17:30		27	15	23			
5:45		1	1	2				17:45		20	24	22			
6:00		1	3	0				18:00		12	14	14			
6:15		6	3	3				18:15		11	17	6			
6:30		8	5	4				18:30		12	9	12			
6:45		3	4	6				18:45		14	12	15			
7:00		12	10	5				19:00		9	2	9			
7:15		10	20	14				19:15		10	13	11			
7:30		19	11	19				19:30		8	10	12			
7:45		29	27	33				19:45		13	6	15			
8:00		45	47	34				20:00		17	12	4			
8:15		35	39	32				20:15		8	6	3			
8:30		30	20	28				20:30		17	10	7			
8:45		25	22	19				20:45		6	1	5			
9:00		25	23	25				21:00		11	3	6			
9:15		15	8	17				21:15		2	5	8			
9:30		18	9	15				21:30		4	5	7			
9:45		19	13	19				21:45		3	2	4			
10:00		18	14	13				22:00		3	6	3			
10:15		9	13	18				22:15		3	8	0			
10:30		20	17	21				22:30		5	3	2			
10:45		20	18	24				22:45		0	2	2			
11:00		26	15	17				23:00		2	1	3			
11:15		17	18	6				23:15		2	0	1			
11:30		17	18	16				23:30		1	1	0			
11:45		18	16	23				23:45		0	1	2			



Site notes:

Claremont Ave between Lochside Dr and Cordova Bay Rd

Eastbound

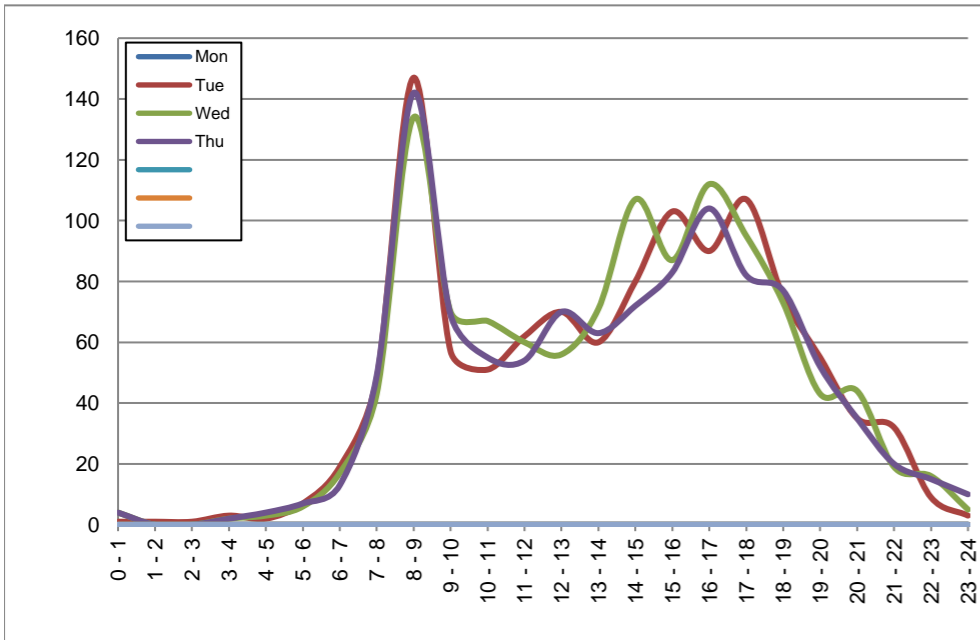
February 24, 2020 to February 27, 2020

Hourly Volumes

Time Period	Mon	Tue	Wed	Thu			
	Feb 24	Feb 25	Feb 26	Feb 27			
0 - 1		1	4	4			
1 - 2		1	0	0			
2 - 3		1	0	0			
3 - 4		3	2	2			
4 - 5		2	3	4			
5 - 6		7	6	7			
6 - 7		19	17	13			
7 - 8		48	43	49			
8 - 9		147	134	142			
9 - 10		57	70	69			
10 - 11		51	67	55			
11 - 12		62	60	54			
12 - 13		70	56	70			
13 - 14		60	71	63			
14 - 15		80	107	72			
15 - 16		103	87	83			
16 - 17		90	112	104			
17 - 18		107	95	82			
18 - 19		75	73	77			
19 - 20		55	43	52			
20 - 21		35	44	35			
21 - 22		32	19	20			
22 - 23		9	16	15			
23 - 24		3	5	10			
Day Total		1118	1134	1082			

15-Minute Volumes

Time Start	Mon	Tue	Wed	Thu			
	Feb 24	Feb 25	Feb 26	Feb 27			
0:00		0	1	0			
0:15		1	1	2			
0:30		0	1	0			
0:45		0	1	2			
1:00		1	0	0			
1:15		0	0	0			
1:30		0	0	0			
1:45		0	0	0			
2:00		0	0	0			
2:15		0	0	0			
2:30		1	0	0			
2:45		0	0	0			
3:00		0	1	1			
3:15		1	0	1			
3:30		2	1	0			
3:45		0	0	0			
4:00		0	1	0			
4:15		0	1	2			
4:30		1	1	1			
4:45		1	0	1			
5:00		3	1	2			
5:15		1	2	1			
5:30		2	2	4			
5:45		1	1	0			
6:00		6	3	3			
6:15		2	2	3			
6:30		6	9	3			
6:45		5	3	4			
7:00		6	5	3			
7:15		12	7	11			
7:30		17	17	18			
7:45		13	14	17			
8:00		22	13	17			
8:15		20	20	26			
8:30		53	52	51			
8:45		52	49	48			
9:00		16	19	22			
9:15		15	25	18			
9:30		16	12	17			
9:45		10	14	12			
10:00		18	26	10			
10:15		14	11	13			
10:30		9	16	17			
10:45		10	14	15			
11:00		13	15	4			
11:15		26	13	12			
11:30		12	17	15			
11:45		11	15	23			
12:00			17	13			
12:15			18	19			
12:30			21	10			
12:45			14	14			
13:00			22	14			
13:15			12	12			
13:30			10	22			
13:45			16	23			
14:00			17	15			
14:15			11	25			
14:30			22	29			
14:45			30	38			
15:00			21	22			
15:15			26	25			
15:30			26	18			
15:45			30	22			
16:00			22	24			
16:15			26	31			
16:30			18	30			
16:45			24	27			
17:00			29	20			
17:15			24	26			
17:30			31	29			
17:45			23	20			
18:00			16	15			
18:15			14	20			
18:30			25	24			
18:45			20	14			
19:00			23	14			
19:15			15	10			
19:30			6	8			
19:45			11	11			
20:00			12	15			
20:15			9	11			
20:30			9	15			
20:45			5	3			
21:00			11	4			
21:15			8	4			
21:30			7	6			
21:45			6	5			
22:00			2	3			
22:15			4	8			
22:30			0	3			
22:45			3	2			
23:00			2	3			
23:15			0	1			
23:30			1	1			
23:45			0	0			



Site notes:

Vehicle Speed Summary

Saanich Engineering Department

Count Id: C0015-03

Filename: Claremont Ave between Lochside Dr and Cordova Bay Rd-Feb-2020.xlsm

Location: Claremont Ave between Lochside Dr and Cordova Bay Rd

Note:

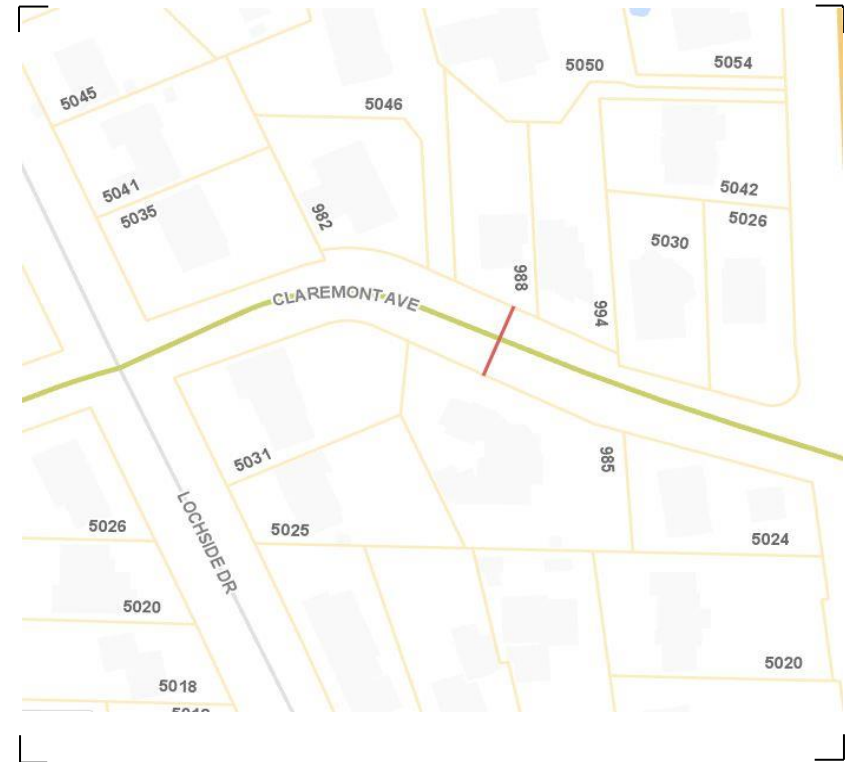
Direction: **East-West**

Dates: **February 25, 2020 To February 27, 2020**

Filtered data

AVG. SPEED	24 mph	38 km/h
50 % SPEED	24 mph	38 km/h
85 % SPEED	27 mph	44 km/h
95 % SPEED	29 mph	47 km/h

Location Map



Claremont Ave between Lochside Dr and Cordova Bay Rd

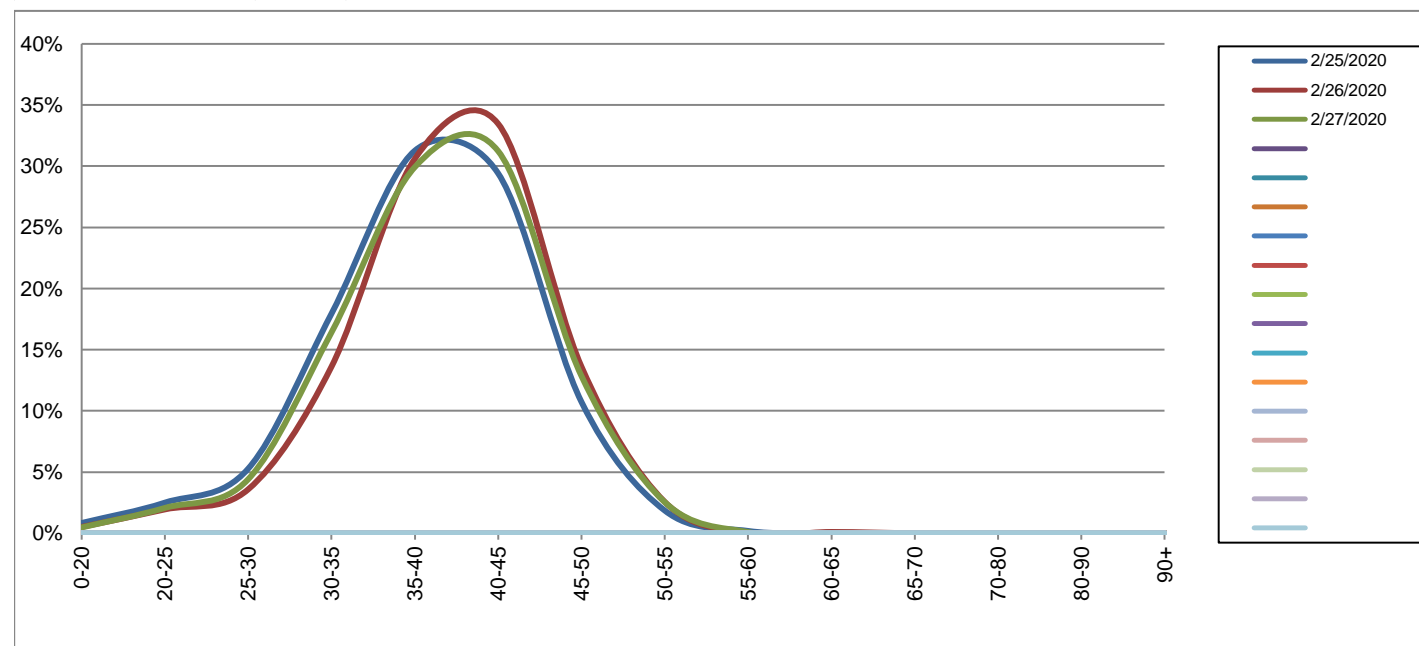
Westbound

February 25, 2020 to February 27, 2020

Daily Speed Bin Percentages															Daily Speed Bin Volumes														Total	Avg.
Bin #	1	2	3	4	5	6	7	8	9	10	11	12	13	14	1	2	3	4	5	6	7	8	9	10	11	12	13	14	Volume	Speed
Bin Speeds	0-20	20-25	25-30	30-35	35-40	40-45	45-50	50-55	55-60	60-65	65-70	70-80	80-90	90+	0-20	20-25	25-30	30-35	35-40	40-45	45-50	50-55	55-60	60-65	65-70	70-80	80-90	90+		
2/25/2020	0.8%	2.5%	5.3%	17.9%	31.3%	29.4%	10.7%	1.9%	0.2%	0.0%	0.0%	0.0%	0.0%	0.0%	9	27	57	194	338	318	116	20	2	0	0	0	0	0	1081	38
2/26/2020	0.5%	1.9%	3.6%	13.6%	30.6%	33.5%	13.6%	2.6%	0.0%	0.1%	0.0%	0.0%	0.0%	0.0%	5	19	35	133	299	327	133	25	0	1	0	0	0	0	977	39
2/27/2020	0.5%	2.1%	4.4%	16.4%	29.9%	31.2%	12.9%	2.5%	0.1%	0.0%	0.0%	0.0%	0.0%	0.0%	5	22	47	175	319	333	137	27	1	0	0	0	0	0	1066	39
Total	0.6%	2.2%	4.4%	16.1%	30.6%	31.3%	12.4%	2.3%	0.1%	0.0%	0.0%	0.0%	0.0%	0.0%	19	68	139	502	956	978	386	72	3	1	0	0	0	0	3124	39

Speed Data Summary

Bin #	1	2	3	4	5	6	7	8	9	10	11	12	13	14	Total
Bin Speeds	0-20	20-25	25-30	30-35	35-40	40-45	45-50	50-55	55-60	60-65	65-70	70-80	80-90	90+	
Survey Total	19	68	139	502	956	978	386	72	3	1	0	0	0	0	3124
% Total	0.6%	2.2%	4.4%	16.1%	30.6%	31.3%	12.4%	2.3%	0.1%	0.0%	0.0%	0.0%	0.0%	0.0%	100%
Accumulated %	0.6%	2.8%	7.2%	23.3%	53.9%	85.2%	97.6%	99.9%	100.0%	100.0%	100.0%	100.0%	100.0%	100%	
Inverse Accum. %	99.4%	97.2%	92.8%	76.7%	46.1%	14.8%	2.4%	0.1%	0.0%	0.0%	0.0%	0.0%	0.0%	0.0%	
Average Speed	39 KM/H														



Site notes:

Claremont Ave between Lochside Dr and Cordova Bay Rd

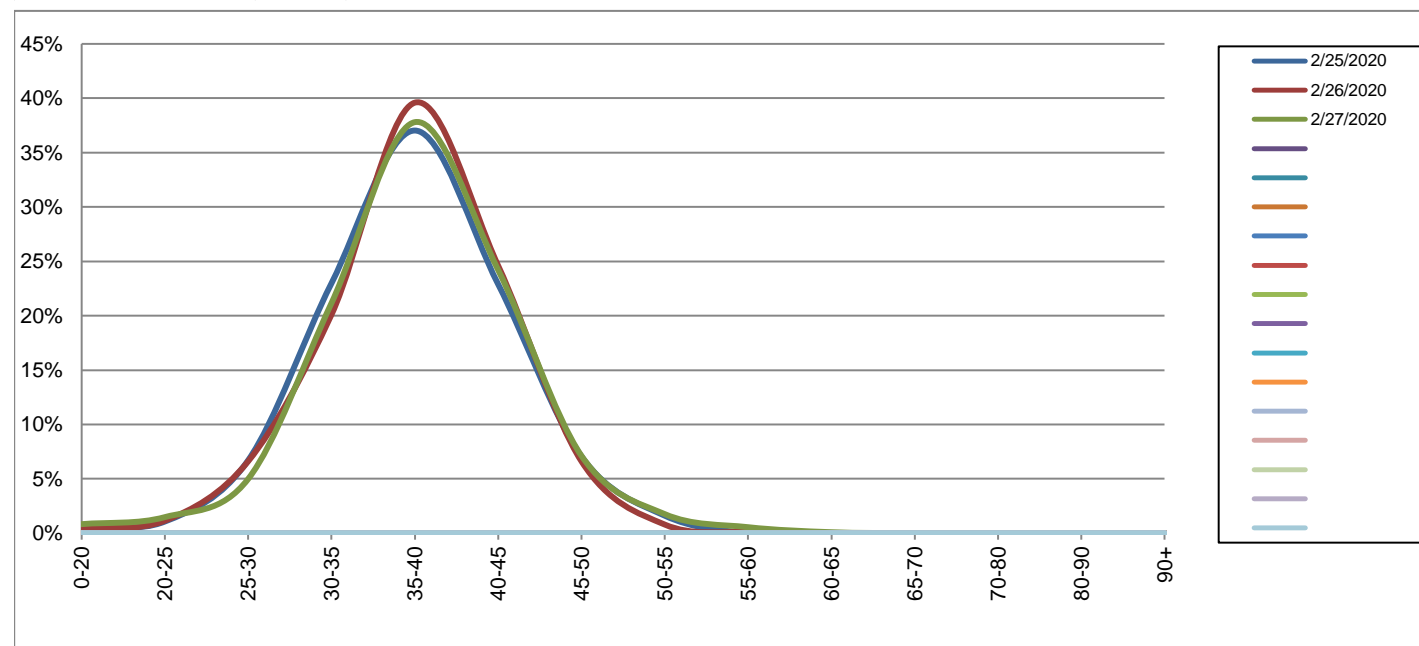
Eastbound

February 25, 2020 to February 27, 2020

Daily Speed Bin Percentages															Daily Speed Bin Volumes														Total	Avg.
Bin #	1	2	3	4	5	6	7	8	9	10	11	12	13	14	1	2	3	4	5	6	7	8	9	10	11	12	13	14	Volume	Speed
Bin Speeds	0-20	20-25	25-30	30-35	35-40	40-45	45-50	50-55	55-60	60-65	65-70	70-80	80-90	90+	0-20	20-25	25-30	30-35	35-40	40-45	45-50	50-55	55-60	60-65	65-70	70-80	80-90	90+		
2/25/2020	0.6%	1.1%	6.7%	23.0%	37.0%	22.9%	7.1%	1.6%	0.0%	0.0%	0.0%	0.0%	0.0%	0.0%	7	12	75	257	414	256	79	18	0	0	0	0	0	0	1118	37
2/26/2020	0.4%	1.1%	6.6%	20.1%	39.6%	24.6%	6.6%	0.8%	0.1%	0.0%	0.0%	0.0%	0.0%	0.0%	5	13	75	228	449	279	75	9	1	0	0	0	0	0	1134	38
2/27/2020	0.8%	1.5%	5.0%	21.2%	37.8%	24.2%	7.1%	1.8%	0.6%	0.1%	0.0%	0.0%	0.0%	0.0%	9	16	54	229	409	262	77	19	6	1	0	0	0	0	1082	38
Total	0.6%	1.2%	6.1%	21.4%	38.2%	23.9%	6.9%	1.4%	0.2%	0.0%	0.0%	0.0%	0.0%	0.0%	21	41	204	714	1272	797	231	46	7	1	0	0	0	0	3334	38

Speed Data Summary

Bin #	1	2	3	4	5	6	7	8	9	10	11	12	13	14	Total
Bin Speeds	0-20	20-25	25-30	30-35	35-40	40-45	45-50	50-55	55-60	60-65	65-70	70-80	80-90	90+	
Survey Total	21	41	204	714	1272	797	231	46	7	1	0	0	0	0	3334
% Total	0.6%	1.2%	6.1%	21.4%	38.2%	23.9%	6.9%	1.4%	0.2%	0.0%	0.0%	0.0%	0.0%	0.0%	100%
Accumulated %	0.6%	1.9%	8.0%	29.4%	67.5%	91.5%	98.4%	99.8%	100.0%	100.0%	100.0%	100.0%	100.0%	100%	
Inverse Accum. %	99.4%	98.1%	92.0%	70.6%	32.5%	8.5%	1.6%	0.2%	0.0%	0.0%	0.0%	0.0%	0.0%	0.0%	
Average Speed	38 KM/H														



Site notes:

Claremont Ave between Lochside Dr and Cordova Bay Rd

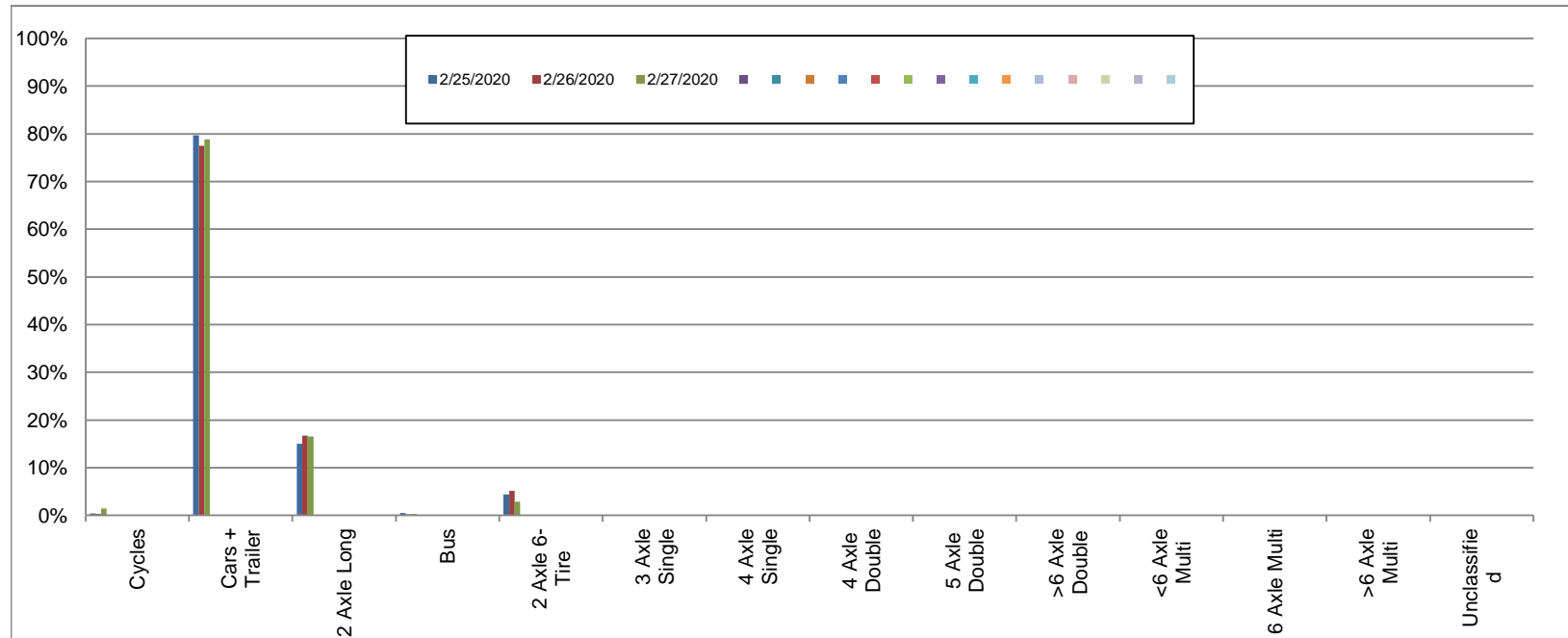
Westbound

February 25, 2020 to February 27, 2020

Daily Class Bin Percentages															Daily Class Bin Volumes														
Bin #	1	2	3	4	5	6	7	8	9	10	11	12	13	14	1	2	3	4	5	6	7	8	9	10	11	12	13	14	Total Volume
Bin Class	Cycles	Cars + Trailer	2 Axle Long	Bus	2 Axle 6-Tire	3 Axle Single	4 Axle Single	4 Axle Double	5 Axle Double	>6 Axle Double	<6 Axle Multi	6 Axle Multi	>6 Axle Multi	Unclassified	Cycles	Cars + Trailer	2 Axle Long	Bus	2 Axle 6-Tire	3 Axle Single	4 Axle Single	4 Axle Double	5 Axle Double	>6 Axle Double	<6 Axle Multi	6 Axle Multi	>6 Axle Multi	Unclassified	
2/25/2020	0.4%	79.6%	15.0%	0.5%	4.3%	0.1%	0.1%	0.0%	0.0%	0.0%	0.0%	0.0%	0.0%	0.0%	4	861	162	5	47	1	1	0	0	0	0	0	0	0	1081
2/26/2020	0.3%	77.5%	16.7%	0.2%	5.1%	0.1%	0.0%	0.1%	0.0%	0.0%	0.0%	0.0%	0.0%	0.0%	3	757	163	2	50	1	0	1	0	0	0	0	0	0	977
2/27/2020	1.4%	78.8%	16.5%	0.3%	2.9%	0.0%	0.0%	0.1%	0.0%	0.0%	0.0%	0.0%	0.0%	0.0%	15	840	176	3	31	0	0	1	0	0	0	0	0	0	1066
Total	0.7%	78.7%	16.0%	0.3%	4.1%	0.1%	0.0%	0.1%	0.0%	0.0%	0.0%	0.0%	0.0%	0.0%	22	2458	501	10	128	2	1	2	0	0	0	0	0	0	3124

Class Data Summary

Bin #	1	2	3	4	5	6	7	8	9	10	11	12	13	14	Total Volume
Bin Class	Cycles	Cars + Trailer	2 Axle Long	Bus	2 Axle 6-Tire	3 Axle Single	4 Axle Single	4 Axle Double	5 Axle Double	>6 Axle Double	<6 Axle Multi	6 Axle Multi	>6 Axle Multi	Unclassified	Total Volume
Survey Total	22	2458	501	10	128	2	1	2	0	0	0	0	0	0	3124
% Total	0.7%	78.7%	16.0%	0.3%	4.1%	0.1%	0.0%	0.1%	0.0%	0.0%	0.0%	0.0%	0.0%	0.0%	100%
Accumulated %	0.7%	79.4%	95.4%	95.7%	99.8%	99.9%	99.9%	100.0%	100.0%	100.0%	100.0%	100.0%	100.0%	100.0%	
Inv. Accum. %	99.3%	20.6%	4.6%	4.3%	0.2%	0.1%	0.1%	0.0%	0.0%	0.0%	0.0%	0.0%	0.0%	0.0%	



Classification Descriptions

Bin #	Bin Description
1	Motorcycles
2	Passenger cars, including those with recreational trailers
3	2-axle pick-ups, vans, and RVs, including those with recreational trailers
4	Buses
5	2-axle, 6-tire single units
6	3-axle single units
7	4-axle single units
8	3-axle or 4-axle double unit
9	5-axle double unit
10	6-, 7-, or 8-axle double unit
11	5-axle multiple unit
12	6-axle multiple unit
13	7-or-more-axle multiple unit
14	Vehicles that could not be classified

Site notes:

Claremont Ave between Lochside Dr and Cordova Bay Rd

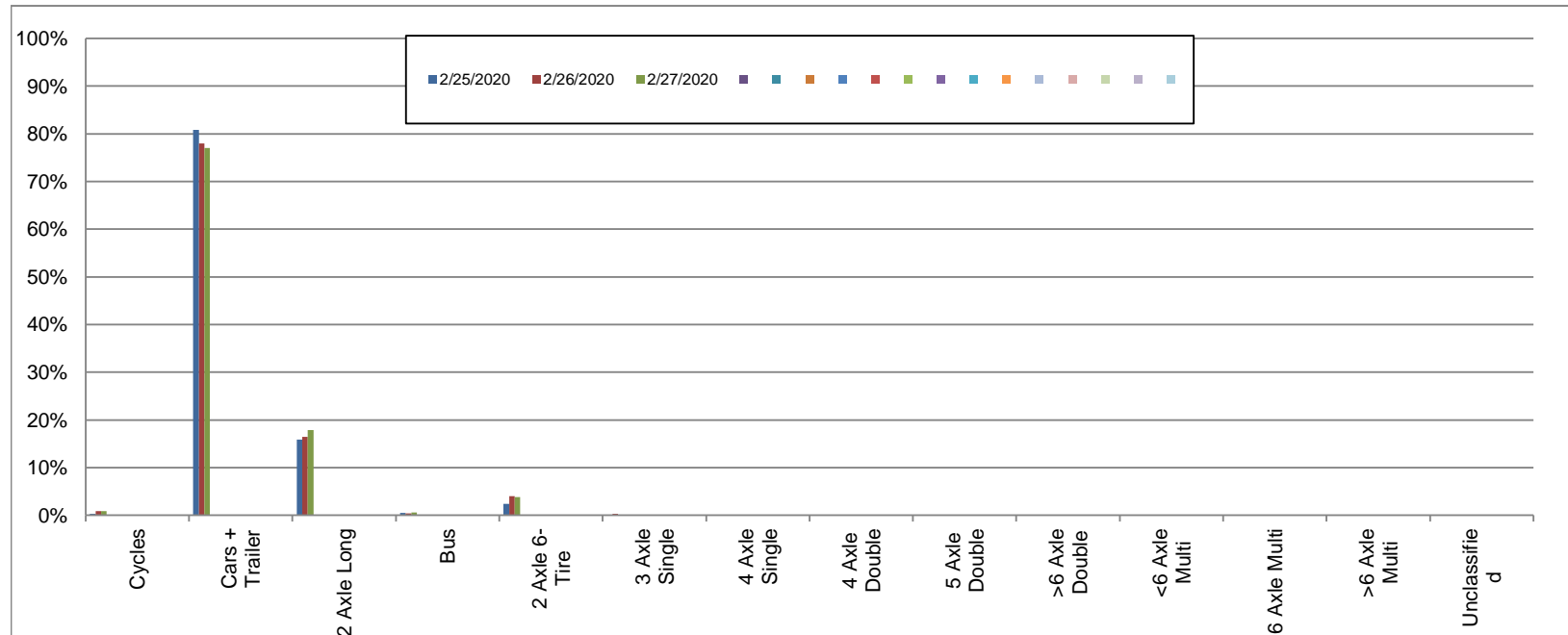
Eastbound

February 25, 2020 to February 27, 2020

Daily Class Bin Percentages															Daily Class Bin Volumes														
Bin #	1	2	3	4	5	6	7	8	9	10	11	12	13	14	1	2	3	4	5	6	7	8	9	10	11	12	13	14	Total Volume
Bin Class	Cycles	Cars + Trailer	2 Axle Long	Bus	2 Axle 6-Tire	3 Axle Single	4 Axle Single	4 Axle Double	5 Axle Double	>6 Axle Double	<6 Axle Multi	6 Axle Multi	>6 Axle Multi	Unclassified	Cycles	Cars + Trailer	2 Axle Long	Bus	2 Axle 6-Tire	3 Axle Single	4 Axle Single	4 Axle Double	5 Axle Double	>6 Axle Double	<6 Axle Multi	6 Axle Multi	>6 Axle Multi	Unclassified	
2/25/2020	0.3%	80.9%	15.8%	0.4%	2.4%	0.1%	0.1%	0.0%	0.0%	0.0%	0.0%	0.0%	0.0%	0.0%	3	904	177	5	27	1	1	0	0	0	0	0	0	0	1118
2/26/2020	0.9%	78.0%	16.4%	0.4%	4.0%	0.3%	0.0%	0.1%	0.0%	0.0%	0.0%	0.0%	0.0%	0.0%	10	884	186	5	45	3	0	1	0	0	0	0	0	0	1134
2/27/2020	0.8%	77.0%	17.8%	0.6%	3.8%	0.0%	0.0%	0.0%	0.0%	0.0%	0.0%	0.0%	0.0%	0.0%	9	833	193	6	41	0	0	0	0	0	0	0	0	0	1082
Total	0.7%	78.6%	16.7%	0.5%	3.4%	0.1%	0.0%	0.0%	0.0%	0.0%	0.0%	0.0%	0.0%	0.0%	22	2621	556	16	113	4	1	1	0	0	0	0	0	3334	

Class Data Summary

Bin #	1	2	3	4	5	6	7	8	9	10	11	12	13	14	Total Volume
Bin Class	Cycles	Cars + Trailer	2 Axle Long	Bus	2 Axle 6-Tire	3 Axle Single	4 Axle Single	4 Axle Double	5 Axle Double	>6 Axle Double	<6 Axle Multi	6 Axle Multi	>6 Axle Multi	Unclassified	Total Volume
Survey Total	22	2621	556	16	113	4	1	1	0	0	0	0	0	0	3334
% Total	0.7%	78.6%	16.7%	0.5%	3.4%	0.1%	0.0%	0.0%	0.0%	0.0%	0.0%	0.0%	0.0%	0.0%	100%
Accumulated %	0.7%	79.3%	96.0%	96.4%	99.8%	99.9%	100.0%	100.0%	100.0%	100.0%	100.0%	100.0%	100.0%	100.0%	
Inv. Accum. %	99.3%	20.7%	4.0%	3.6%	0.2%	0.1%	0.0%	0.0%	0.0%	0.0%	0.0%	0.0%	0.0%	0.0%	



Classification Descriptions

Bin #	Bin Description
1	Motorcycles
2	Passenger cars, including those with recreational trailers
3	2-axle pick-ups, vans, and RVs, including those with recreational trailers
4	Buses
5	2-axle, 6-tire single units
6	3-axle single units
7	4-axle single units
8	3-axle or 4-axle double unit
9	5-axle double unit
10	6-, 7-, or 8-axle double unit
11	5-axle multiple unit
12	6-axle multiple unit
13	7-or-more-axle multiple unit
14	Vehicles that could not be classified

Site notes: